

If you have any comments about this leaflet or the service you have received you can contact :



Service Lead X-Ray
Radiology Department
Huddersfield Royal Infirmary
Lindley
Huddersfield
HD3 3EA



Telephone No. (01484) 342299

or

Complex Needs Matron
Huddersfield Royal Infirmary, via Switchboard
Telephone No. (01484) 342000
www.cht.nhs.uk

If you would like this information in large print, Braille, audio, CD or in another language contact the above.

NHS Direct
Tel: 0845 4647

Website: www.nhsdirectnhs.uk



Calderdale and Huddersfield NHS Foundation Trust has a no smoking policy across all buildings, but smoking is permitted in the designated smoke shelters located within the grounds.

Leaflet No LD0003 Dated 2/10 Review Date 2/12



Calderdale and Huddersfield **NHS**
NHS Foundation Trust

Radiology Department

Having a CT Scan



Your Care
Our Concern

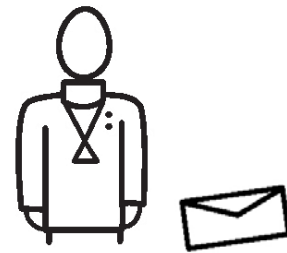




Shelley's CT scan is finished

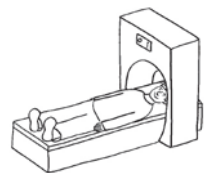


When the scan is finished the radiographer will tell you when you can go.

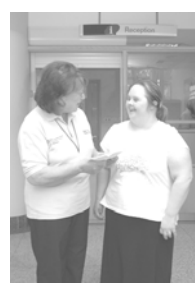


You will get the results from the doctor who asked you to come.

Having a CT Scan

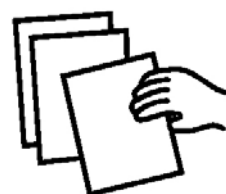


You are coming for a CT scan.

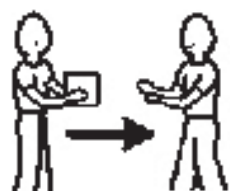


At the main reception someone can show you the way to the x-ray department.

This is where CT is.



You should have a card or letter to bring with you.



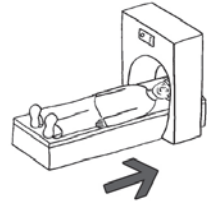
Give your card or letter to the receptionist.



You can sit in the waiting room until it is your turn.



Shelley in the CT scanner



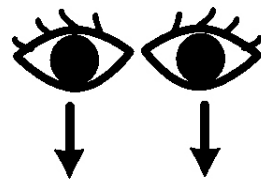
You will lay on a table which moves through the scanner.



Nothing will touch you and it will not hurt.



You do need to keep as still as you can though.



The radiographers will leave the room but they can see you through a window.



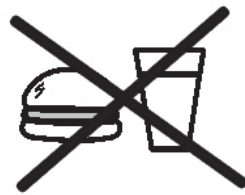
They can hear you and speak to you too.



You might be asked to hold your breath for a few seconds.



Shelley in reception



You may have been asked not to eat or drink before your appointment.



You may be asked to go into a cubicle to get changed into a gown.



To get better pictures you might need to drink some liquid.



Or have an injection in your hand or arm.



Your scan will last between 15-30 minutes.



Shelley having an injection